

SEC 11

SEC 12

SEC

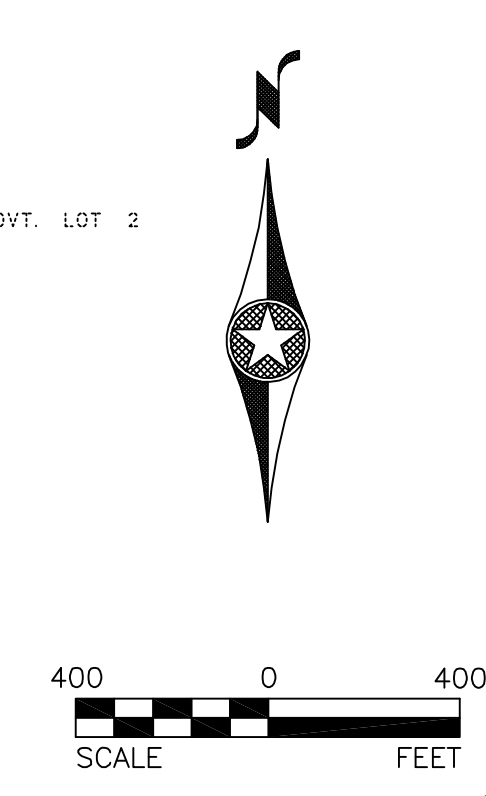
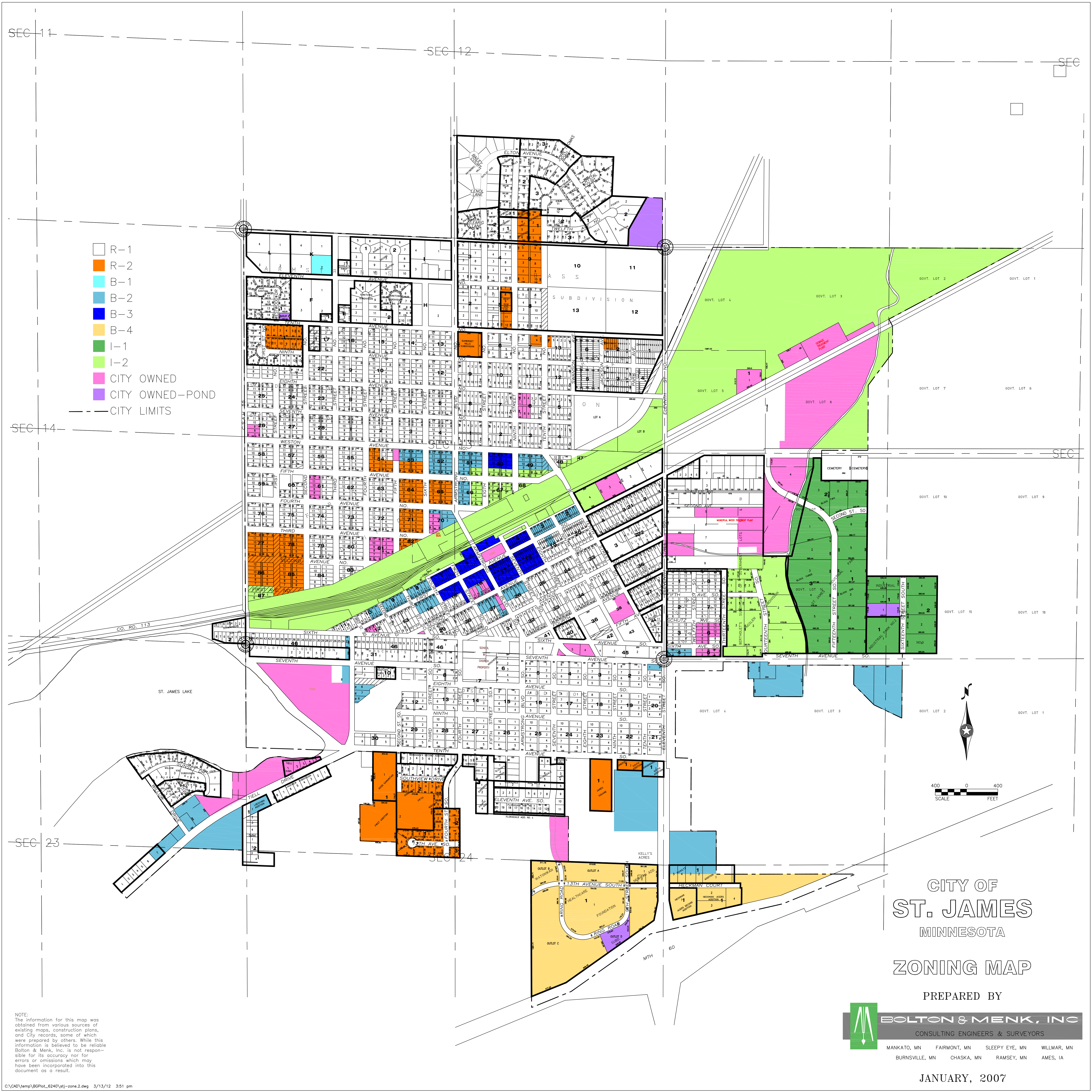
- R-1
- R-2
- B-1
- B-2
- B-3
- B-4
- I-1
- I-2
- CITY OWNED
- CITY OWNED-POND
- CITY LIMITS

SEC 14

SEC

SEC 23

SEC 24



CITY OF
ST. JAMES
 MINNESOTA
ZONING MAP

PREPARED BY



MANKATO, MN FAIRMONT, MN SLEEPY EYE, MN WILLMAR, MN
 BURNSVILLE, MN CHASKA, MN RAMSEY, MN AMES, IA

JANUARY, 2007

NOTE:
 The information for this map was obtained from various sources of existing maps, construction plans, and City records, some of which were prepared by others. While this information is believed to be reliable Bolton & Menk, Inc. is not responsible for its accuracy nor for errors or omissions which may have been incorporated into this document as a result.