



# CITY OF SAINT JAMES

## DEMOGRAPHIC PROFILE

### ABOUT US

St. James is a proud community of just under 5,000 people. St. James was founded in the late 1800's as the halfway point on a new rail line between St. Paul, MN and Sioux City, IA. In addition to pride in its history, our community is proud of St. James Lake, our extensive parks & trails system, our prominent agriculture, manufacturing, and industrial businesses and our annual events!

### KEY STATISTICS

**4,793**

TOTAL POPULATION

**1,859**

TOTAL HOUSEHOLDS

**37.4**

MEDIAN AGE

**2.3**

AVERAGE HOUSEHOLD SIZE

### INCOME



**\$38,662**

MEDIAN HOUSEHOLD INCOME



**\$24,890**

PER CAPITA INCOME



**16.4%**

PERSONS BELOW POVERTY

### EDUCATION



**19.4%**

NO DEGREE



**39.5%**

HIGH SCHOOL



**26.1%**

SOME COLLEGE

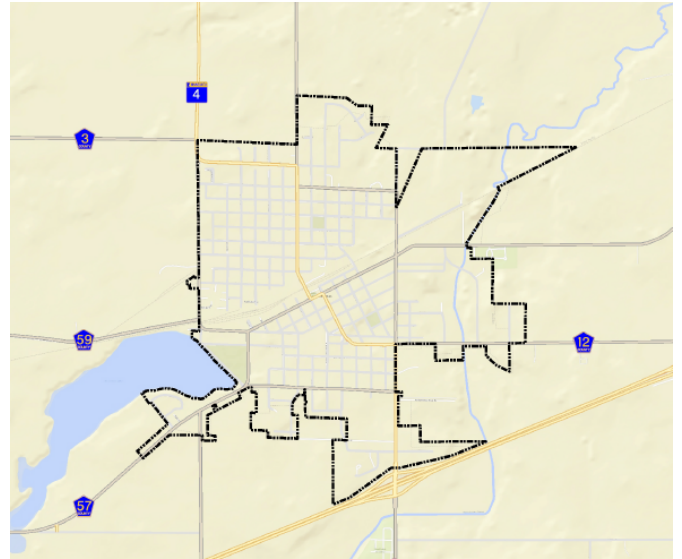


**15.1%**

BACHELOR'S/GRAD

### UNEMPLOYMENT RATE

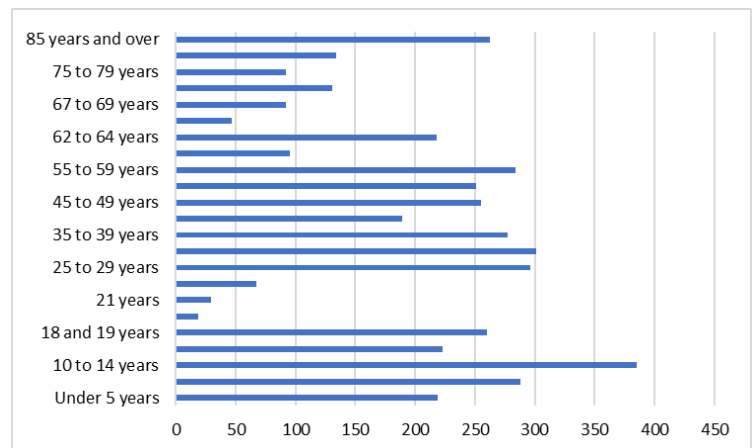
**1.4%**



### POPULATION BY RACE

White	59.38%
Black and African American	0.43%
Hispanic	40.53%
Asian	0.68%
Native Hawaiian and Other Pacific Islander	0.00%
American Indian and Alaskan Native	1.50%

### POPULATION BY AGE



### MEANS OF TRANSPORTATION TO WORK

<b>77%</b> Drove Alone	<b>10%</b> Carooled	<b>9%</b> Walked
<b>2%</b> Worked at Home	<b>2%</b> Public Transit	

All data was taken from Census Data: 2020 ACS 5 Year Estimate

507-375-3241  
City of St. James  
ci.stjames.mn.us